

CR Pro Creative Video Wall Processor



CR pro creative video wall processor is used in exhibition and other applications, video wall is not limited as the media to show the information , creative design can greatly enhance the overall display effects and to bring more impact visual experience. CR pro creative video wall processor can personalized video wall for users, it has been widely used in the exhibition hall, business hall, the street windows and other applications.

- Video Wall Layout is more flexible
- 4K@60hz Ultra HD signal support
- 24/7 Operation, Compact device, Easy to install, use & maintain



4K Ultra HD signal support

Support 4K@60hz Ultra HD signal acquisition, HDMI2.0 interface
Resolution up to 3840*2160@60Hz, adaptive backward compatible



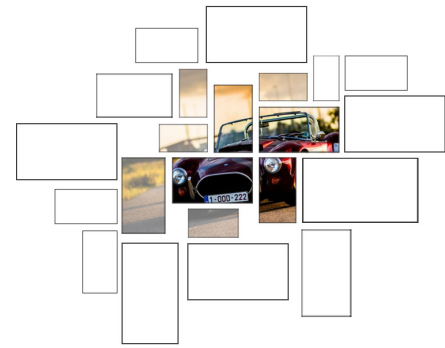
More Flexible Layout

Besides supporting traditional MxN splicing, the position of the display device can also be set free, the output signal by the frame sync, smooth consistency, without tearing. Built-in screen rotation function, without the need for special handling sources, each output signal can be independent of 90 ° / 180 ° / 270 ° rotation , supports horizontal / vertical screen combination in the same group screen.



Unlimited Video Wall Scale

Generally, iSEMC CR pro creative video wall processor support customizing output scale from 2 to 24, which supports video walls up to 24 monitors and allows the input resolution reaches much higher than 4K. And we also accept special customization when your creative video wall design requires moer than 24 monitors.



Edge Compensation

Support eliminated a sense of visual incoherence because of the lcd's edge, and the compensation range can be freely set.



SPECIFICATIONS

Input	HDMI	Signal format	HDMI 2.0/DP 1.2/HDMI 1.4
		Resolution	Max 3840*2160@60Hz
		Audio Output	1 stereo
Output	HDMI	Signal format	HDMI 1.3
		Interface type	HDMI TYPE A
		Output Channels	2-24
		Resolution	1920*1080@60Hz

Image Processing	Image rotation	90 °, 180 °, 270, mirroring
	Edge Compensation	Support
	Color	24bit, 16.77m
Control	Serial port	RS232
	Key Button	Support
Environment	Temperature	0°C-40°C
	Humidity	10%-90%
Size	442(W)*242 (D) *45-90(H)mm	
Voltage	100-220V	
Power	Max 20W	
Weight	3.0-5.0 KG	

CR Pro